



Cue Energy Resources Limited

A.B.N. 45 066 383 971

Level 21
114 William Street
Melbourne Victoria 3000
Australia

Telephone: (03) 9670 8668
Facsimile: (03) 9670 8661
Email: mail@cuenrg.com.au
Website: www.cuenrg.com.au

TO : Company Announcements Office
10th Floor
20 Bond Street
Sydney NSW 2000

DATE : 4th April 2012

PAGES (including this page): 3

FROM : Andrew Knox

RE : **Acquisition of Maari 3D Seismic Survey Commences**

Attached please find Cue Energy Resources Limited release with respect to the above mentioned.

Yours faithfully

A handwritten signature in black ink that reads "Andrew Knox".

Andrew M Knox
Public Officer



Cue Energy Resources Limited

A.B.N. 45 066 383 971

RELEASE

(ASX: CUE; NZX: CUE; POMSOX: CUE; ADR/OTC: CUEYY)

Acquisition of Maari 3D Seismic Survey Commences

Cue Energy Resources Limited is pleased to announce that acquisition of the Maari 3D seismic survey has commenced in permits PMP 38160 and PEP 51313 in the offshore Taranaki Basin of New Zealand.

The survey comprises 254 sq km of seismic data and is being recorded with the survey vessel *Polarcus Alima*. The survey will provide new data coverage over the Maari and Manaia fields and the Pike and Paua prospects to the south. The data will be used to mature drilling opportunities for the Maari appraisal campaign planned for the 2012/2013 summer period. The survey is expected to take approximately 20 days to record subject to weather.

Participants in PMP 38160 are:

| | |
|-----------------------------------|-----|
| Cue Taranaki Pty Ltd | 5% |
| OMV NZ Ltd (Operator) | 69% |
| Todd Maari Limited | 16% |
| Horizon Oil International Limited | 10% |

Participants in PEP 51313 are:

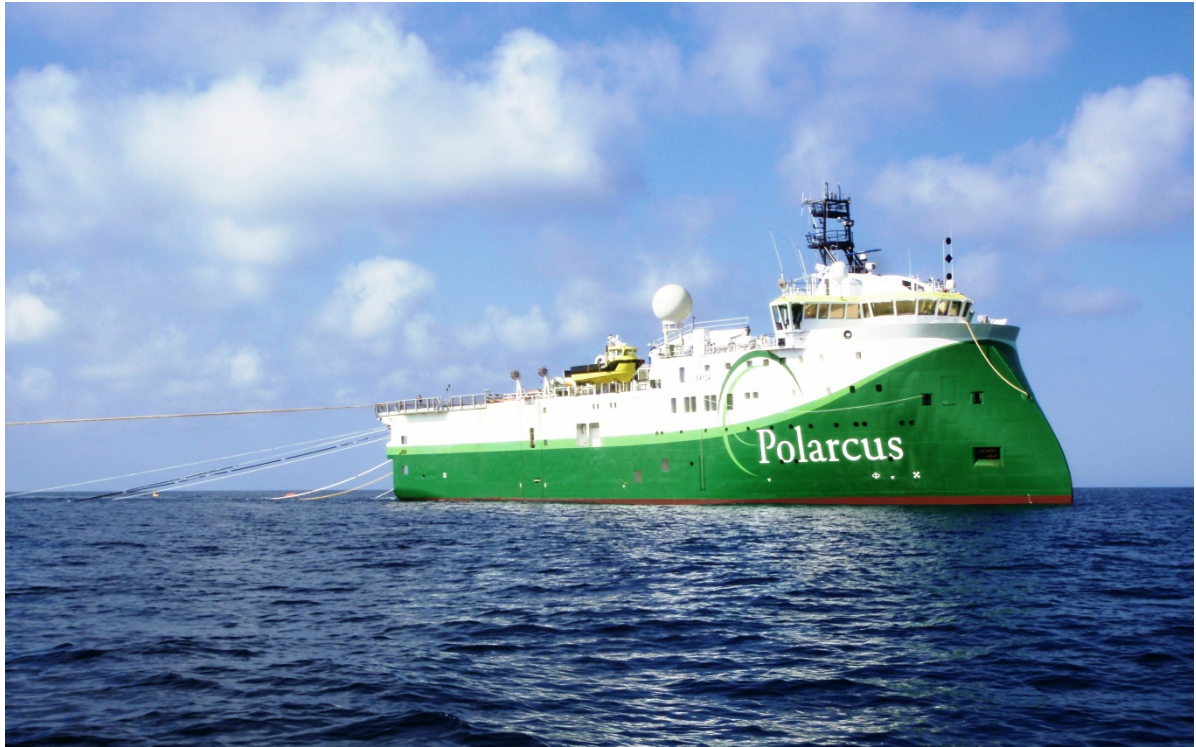
| | |
|-------------------------------------|-----|
| Cue Taranaki Pty Ltd | 20% |
| Todd Exploration Pty Ltd (Operator) | 50% |
| Horizon Oil (New Zealand) Limited | 30% |

Any queries regarding the announcement should be directed to the Company on (03) 96708668 or email mail@cuenrg.com.au.

A handwritten signature in black ink, appearing to read 'Mark Paton'.

Mark Paton
Chief Executive Officer

4th April 2012



Survey Vessel Polarcus Alima